

1532 Technical Specification

CONTACTS

For all technical enquiries, please contact the Technical Manager:

Robb Gosset: 0117 933 9658

rgosset@bgs.bristol.sch.uk

For all other enquiries, please contact the Centre Manager:

Libby Charlton: 0117 259 1532

1532@bgs.bristol.sch.uk

LOCATION

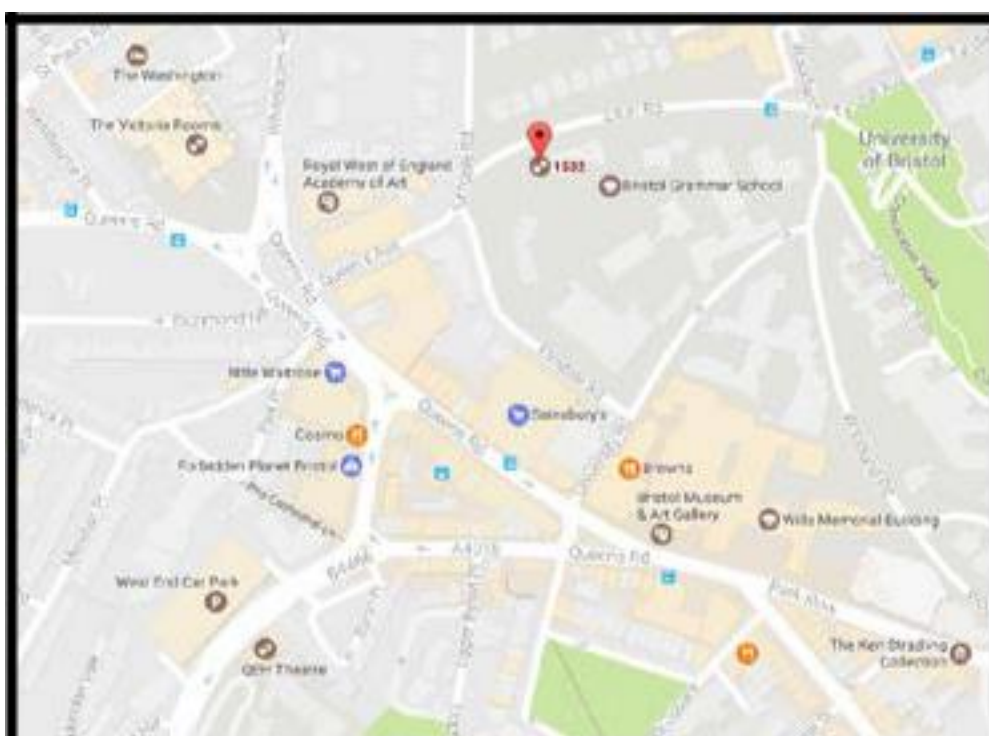
Vehicle access to the centre is on Elton Road. Elton Road is a one-way street so needs to be accessed from Woodland Road (see map below). Use BS8 1SJ for sat nav devices.

GET IN

	Width	Height
Scene dock shutter	3.4m	2.7m
Stage rear entrance	2.2m	3.4m

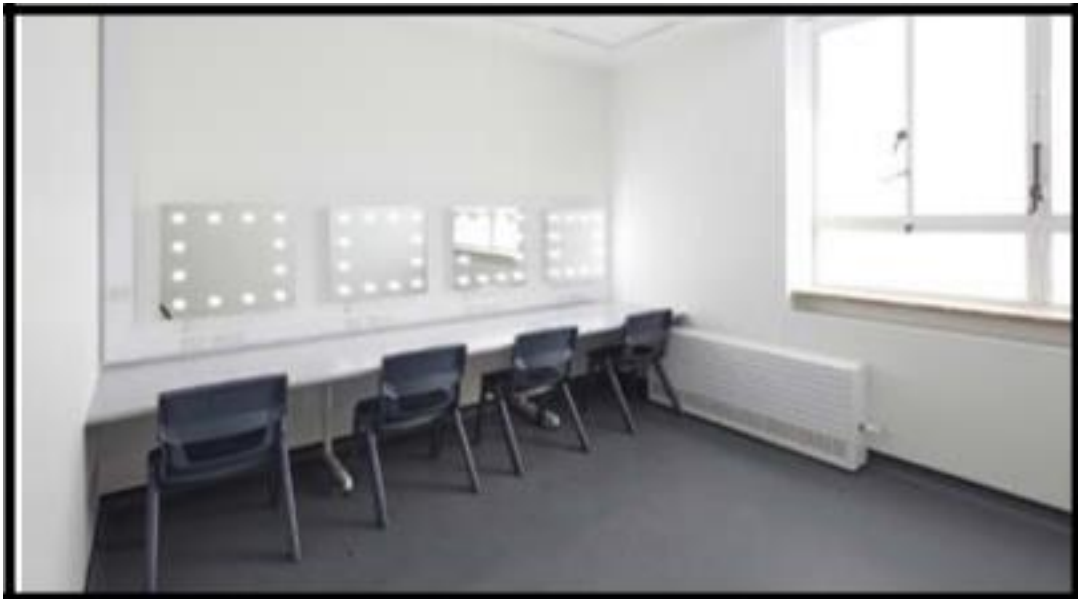
There is space behind the theatre for you to unload, we can accommodate vans and trucks up to 7.5t. During term time, vehicles will have to be re-moved from the school site. During school holidays and at the weekend, they can remain parked behind the theatre for short runs.

If you are touring with larger vehicles, please speak to the venue.



DRESSING ROOMS

There are two dressing rooms, each can hold approximately 10 people max. There are toilet and shower facilities and accessible facilities available too.



PIANO

We have a Yamaha C1 grand piano that is available to hire for £50 per day. If you require the piano to be moved, this will incur an additional charge of £69 for the retuning.

WARDROBE

We do not have wardrobe facilities. We can offer costume rails, an ironing board and iron.

GREEN ROOM

We do have a small room with tea and coffee making facilities. There is no microwave.

COMMUNICATION

Portable Comms

- 1 x Intercom master station (located in control box)
- 8 x comms belt packs, 2 channel
- 8 x Headsets (Single Muff)
- 2 x loudspeaker stations located in the Dance and Drama Studio
- 2 x headset stations located at follow spot positions.

Cue Lights

- 1 x Interspace TheatreCue v4 16way master station
- 12 x Interspace TheatreCue v4 Outstation

We have an infra-red system installed for the hard of hearing. We have a radiator rigged in the theatre and 4 neck loop devices that we can give to members of the audience.

Please be aware that all equipment may not be available for your hire. Please discuss your requirements with the AV manager prior to booking.

AV SYSTEMS

Projection

Christie 121-027111-01 DWX951-Q 1 chip DLP projector 8900L 1280 x 800
WUXGA Christie 121-119102-01 short throw zoom lens - 1.2-1.8:1 1 x front
projection screen 16:10 white - 6m wide.

Laptop Plug-in Panels

2 x Atlona AT-HDVS-TX-WP-UK HDMI & VGA panel (located in the control box and the rear right gallery) Portable lectern with HDMI and VGA input panel.

Playback

Denon DBT1713P rack mountable Blu-Ray player
Tascam CD200iL CD Player + iPod dock - 2U Rack Mounting
1 x Mac Mini with QLab 3 full pro licence

Stage Power

There are two company supplies, one stage left and one stage right, they both have metering and RCD protection. They contain the following:

- 1 x 32A 3Phase ceeform
- 1 x 32A Single Phase ceeform
- 1 x 16A Single Phase ceeform
- 2 x 13A twin stage tech sockets

Lighting Power

10 x Strand Relay Rack - 12 Channel - 2.3kW with 10A circuit breaker per channel

RIGGING

All Flying IWBs are controlled from the gallery via drill driven Dynaglide 250kg / Five line winches, a hand drill to raise and lower these is provided. All IWBs in the Theatre have a load rating of 250kg evenly spread.

Type	Connectivity	Quantity
Flying IWB over Stage	8 x PowerCON, 2 x DMX, 1 x RJ45	3
Static IWB over Stage	8 x PowerCON, 2 x DMX, 1 x RJ45	2
Static IWB over Auditorium	8 x PowerCON, 2 x DMX, 1 x RJ45	3
Static IWB on Auditorium		
Galleries - Horizontal	6 x PowerCON, 2 x DMX, 1 x RJ45	2
Static IWB on Stage		
Galleries - Horizontal	4 x PowerCON, 2 x DMX, 1 x RJ45	2
IWB Vertical Stage Booms	3 x PowerCON, 1 x DMX, 1 x RJ45	4

We also have two 600mm Tank Traps with 50mm receivers.

Portable Access Tower

The tower can be used/assembled by PASMA qualified technicians and must be requested in advance and in accordance with the instructions provided.

BOSS Evo Ladderspan Camlock AGR, double width, working height of 8.5m.

LIGHTING

The theatre has no dimmable circuits and is set up to facilitate an LED exclusive rig. There are a total of 120 PowerCON sockets located around the space. There are company supplies at both stage left and right giving you the ability to use your own portable dimmers.

Please note that all electrical equipment bought by the company for use on the stage/backstage or in the dressing rooms must have appropriate PAT labels.

Control

1 x ETC Ion with 2 x 20 fader wing
1 x 19" Touchscreen control

ETC paradigm system with portable touchscreen for house lights and blues control. Please note that the house lights cannot be controlled from the lighting desk.

Fixtures (please see drawings on pages 8&9)

6 x ETC ColorSource Profile + lens 15-30 (4 of these fixtures make up part of our fixed rig on AX 3 and may only be refocused and not moved. They contribute to a full stage wash)
6 x ETC ColorSource Profile + lens 25-50 (2 of these fixtures make up part of our fixed rig on AX 3 and may only be refocused and not moved. They contribute to a full stage wash)
4 x Robe LED Wash 300 - Not moveable
1 x Chauvet Rogue R1 Spot - Not moveable
22 x Selecon PL Fresnel
6 x Selecon CYC Floods
16 x Chauvet Colordash Par Quad 18 (12 of these are part of our fixed rig, please discuss any movement of these fixtures with the AV Manager)
6 x Selecon PL Profile + lens 18-34
1 x SGM Q7 Colour Flood Strobe (£80 per week hire charge)
4x Chauvet CorePar UV (£20 each per week hire charge)

We do not have follow spots in our lighting stock; however we do have 2 dedicated follow spot locations should you wish to hire in. They are located in the gallery at rear left and right. the control panels at these locations contain:

Cue light
Comms
1 x powerCON (independent of main lighting distribution)
1 x Tecpro headset station

SOUND

1 x Allen & Heath QU32
1 x Allen & Heath GLD-AR2412 Digital Audio Rack - 24 in 12 out.
1 x Allen & Heath GLD- AR0804 Expander - patchable from control rack increasing total ins to 32 and outs to 16
16 BSS AR133CH DI box - active x 8

Microphones

Microphones included with Hire:

(Please note that all of the microphones are shared across the site and therefore may not be available, please speak to the AV Manager to ensure your required selection is available)

- Shure BETA 58A Dynamic x 3
- Shure SM58-LCE Dynamic x 3
- Shure BETA 57A Dynamic x 2
- Sennheiser e906 Dynamic x 2
- Shure SM57-LCE Dynamic x 6
- Sennheiser EW135 G3 GB Radio Microphone Handheld or wireless pack x 1
- Audio Technica ES933 Hanging Microphone (permanently rigged in Theatre to provide audio show relay) x 2

Microphones available for hire:

- AKG C414-XLS/ST Studio Condenser Microphone - matched pair - £30 per day / £90 per week.
- Sennheiser ME-66 Shotgun mic - (two available) - £15 per day/£45 each.
- Sennheiser G3 Microphone Handheld or Radio Pack System (1 included with Theatre hire, further 3 available for additional cost) - £15 per day each / £45 per week each.
- Sennheiser HSP 2-ew Headset Mic (Beige) - £10 Day / £30 Week
- Shure BETA 52A Bass Drum Microphone - £5 per day / £20 Week
- AKG Rhythm Pack Drum Kit Mic Pack - £25 per day / £75 Week
- Contains:
 - 1 x D112 bass drum microphone
 - 2 x C430 for overheads
 - 3 x D40 for toms

Other Loose Equipment

K&M Microphone Stand – Tall Boom x 12
K&M Microphone Stand – Small Boom x 4
Large quantity of XLR cables – 2, 3, 5, 10, 20 metre
Genelec 8010 Monitors in Control Room

Paging

Building wide Cloud paging system including:

DCM1E Digital Zone Mixer
PM8 paging microphone in control box and Box Office
8 Zones of broadcast
Phono and 3.5mm jack input for Background Music in Box Office

SOFT GOODS

FOH Drapes

Lined Velour with hooks on top, 30% fullness and a weighted base (Motor Controlled)

Upstage

Mid Stage half tabs - Black Wool Serge - hooks on top, 30% fullness and a weighted base

Upstage Backdrop - Black Wool Serge - hooks on top, 30% fullness and a weighted base

Cyclorama - Filled White Cloth - hooks on top, sewn flat and a pocket base

Borders

Borders - Black Wool Serge - ties on top, 30%

fullness and a hemmed base

Gallery Masking

Single Cloth - Black Wool Serge - hooks on top, 30%

fullness and a weighted base

Legs

X6 Black Wool Serge - ties on top, 30%

fullness and a weighted base

Gallery Wall Covering

Single cloths - Black Wool Serge - hooks on top, 30% fullness and weighted base

EFFECTS

Please speak to our AV team if you wish to use any special effects. Please note that we are extremely limited in what we are able to use due to our licensing conditions. Smoke and haze are permitted.

CAPACITY

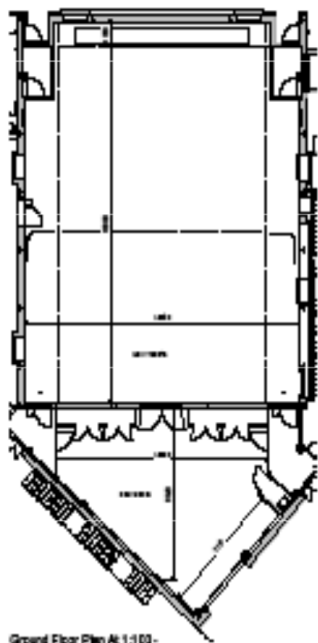
245 using the retractable seating plus row AA. Additional rows can be added to take capacity up to 300 for a lecture/presentation set up. Please speak to venue management if you wish to explore alternative options.

STAGE

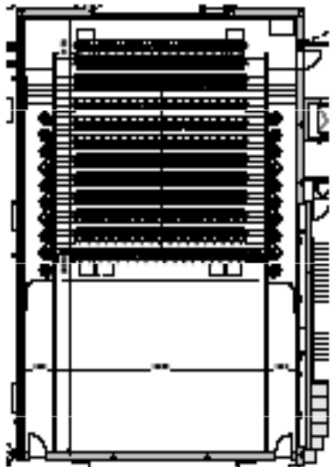
The theatre does not have any raised staging, you are welcome to hire it in.

Stage Area

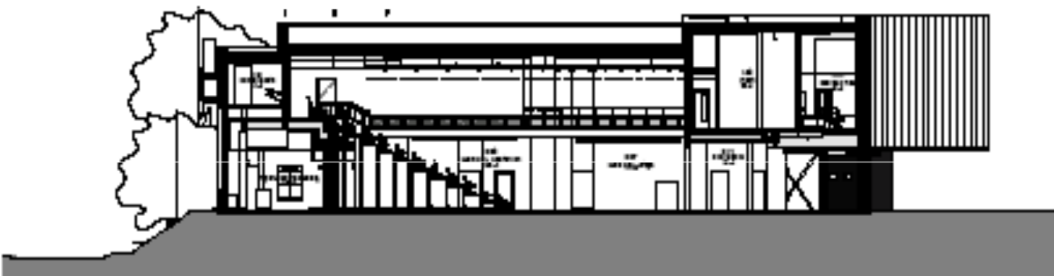
Wall to wall (width)	16m
Wings to wings (width)	12.4m
Rear stage to front row of Seats (AA)	10.9m
Floor to lighting bars (height)	6.7m



Ground Floor Plan At 1:100 - Seating Retracted



First Floor Plan At 1:100 - Seating Out



Section Through Main Hall, Stage & Scene Dock At 1:100